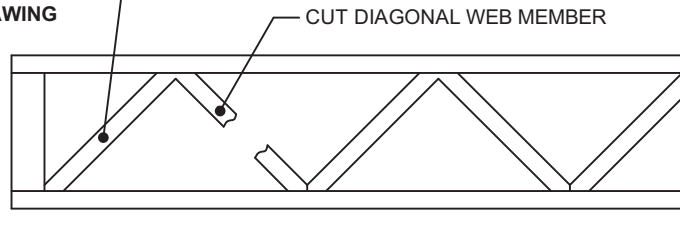


TYPICAL REPAIR METHOD FOR A CUT DIAGONAL WEB MEMBER NO PIPE

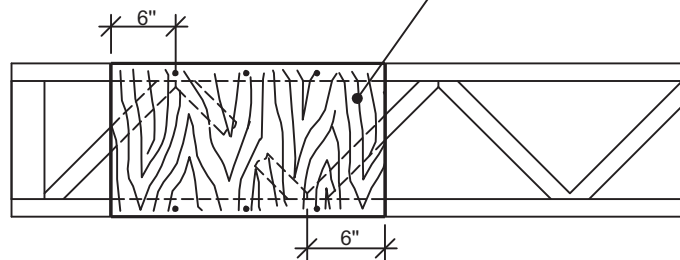
SITUATION BEFORE REPAIR

IF CUT IN THE FIRST DIAGONAL WEB MEMBER, THIS DETAIL DRAWING DOES NOT APPLY.



SITUATION AFTER REPAIR

PLYWOOD** OF AT LEAST ½" x 2'-0", SECURED IN THE VERTICAL POSITION, ON BOTH SIDES, TO THE TOP AND BOTTOM CHORD WITH GLUE* AND 2½" NAILS @ 6" O.C.



*PL PREMIUM GLUE
** Plywood - at least ½" 4 ply (1⁵/₃₂") or better

RTF-002-18

IMPORTANT NOTICES

This detail drawing is valid for uniform residential loads.
For other types of loads, contact the manufacturer.
Check out the www.openjoisttriforce.com website for the latest updates.

